



KiTS Mobile Trading App

INTRODUCTION:

KiTS Trading Interface It shows buying and selling rate of shares with respect to its symbol. Within its Market Watch, it contains more detailed information about each share. The user can buy or sell their shares through this application. Furthermore, the user can keep an eye on activities happening in the market. The detailed information about the features of Trade Cast Client is described below.

1. INSTALLATION PROCEDURE:

From your Smartphone, open Play Store on your Mobile, install KiTS Application. Please enter given User ID & Password sent to your email.

The following login screen will appear after the downloading has finished.

1. INTRODUCTION:

Tick is mobile version of KiTS Trading Interface through which Brokers/their Clients can now be able to trade through their Smartphone with ease. The detailed information about the features of Tick is described below.

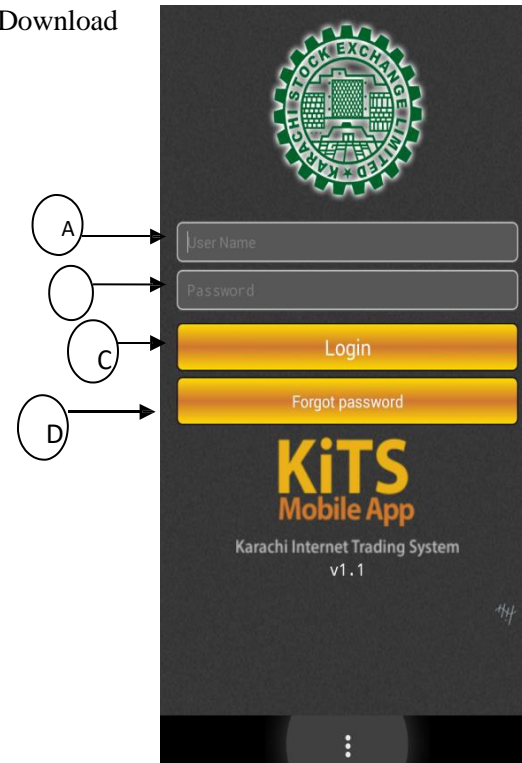
2. INSTALLATION PROCEDURE:

From your Smartphone, open browser and enter the given URL in URL bar. Download the app and run it. The following window will appear on your mobile screen.

Login Window

From your Smartphone, open browser and enter the given URL in URL bar. Download the app and run it. The following window will appear on your mobile screen.

- A) Enter username.
- B) Enter password.
- C) Click 'Login' to log in the application.
- D) Click 'Register for free' to register your account.
- E) Click 'Forgot password' if you do not remember your password.



3. GETTING STARTED:

Main Window

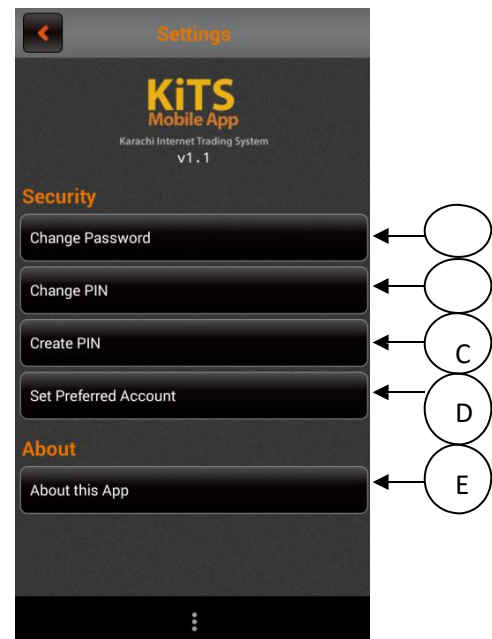
- A) Shows market name.
- B) Shows market volume, market status and username.
- C) Shows current market value.
- D) Touch this button to open Settings window.
- E) Touch this button to open scrip search window.
- F) Text box to add scrip on your market watch.
- G) Market watch window.
- H) Touch to navigate between tabs.



i. Settings

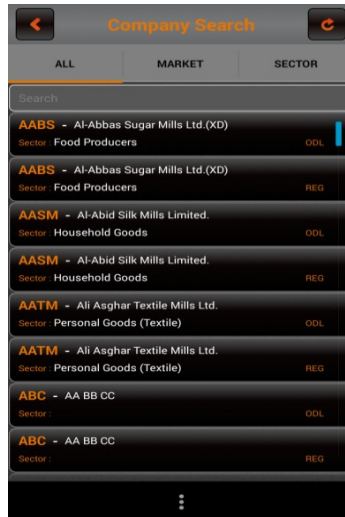
Settings window contains following options.

- A) Select 'Change Password' to change your current login password.
- B) Select 'Change Pin' to change your current trading pin.
- C) Select 'Create Pin' to create a new trading pin.
- D) Select 'Set Preferred Account' to set the priority between accounts.
- E) Shows information about the application.



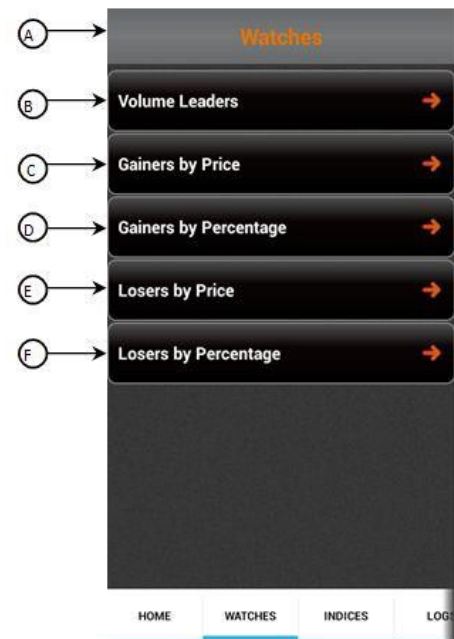
ii. Search

By clicking on search option, the following screen will appear. This window contains list of all companies along their symbols. You can search with respect to market, sector or contract.



Watches

- A) Name of current tab appearing on the screen.
- B) Volume Leaders option.
- C) Gainers by Price option.
- D) Gainers by Percentage options.
- E) Losers by Price option.
- F) Losers by Percentage option.



i. Volume Leaders

- A) Name of current tab appearing on the screen.
- B) List of symbols that are on top according to volume.



Symbol	Vol	Price	Change
LPCL	37.20m (23.95%)	17.00	0.81 (5.00%)
AKBL	9.81m (5.83%)	22.18	0.38 (1.74%)
BAFL	7.94m (4.53%)	28.85	0.01 (0.03%)
PAEL	5.99m (3.24%)	29.30	0.11 (0.38%)
PIOC	5.73m (3.24%)	53.50	1.03 (1.96%)
MLCF	5.47m (3.24%)	27.86	0.05 (0.18%)
UBL	5.17m (3.24%)	191.35	1.05 (0.55%)
TPL	5.10m (3.24%)	10.78	0.19 (1.79%)
DGKC	3.93m (1.94%)	82.90	0.32 (0.38%)

ii. Gainers by Price

- A) Name of current tab appearing on the screen.
- B) List of symbols that are on top according to price.



Symbol	Vol	Price	Change
RMPL	100	11235.00	535.00 (5.00%)
COLG	420	1569.00	68.00 (4.53%)
SIEM	1,100	1080.00	51.32 (4.99%)
SAPL	50	750.42	35.73 (5.00%)
HINO	29,700	596.93	28.42 (5.00%)
BATA	440	3200.00	23.70 (0.75%)
GLPL	300	429.97	20.47 (5.00%)
BHAT	350	471.00	19.49 (4.32%)
ARPL	47,900	391.92	18.66 (5.00%)

iii. Gainers by Percentage

- A) Name of current tab appearing on the screen.
- B) List of symbols that are on top according to percentage.



Symbol	Vol.	Current Price	Change (%)
SHCI	0.74m (0.00%)	3.90	0.90 (30.00%)
MFTM	1.23m (0.65%)	5.25	0.92 (21.25%)
FIBLM	0.11m (0.00%)	3.00	0.50 (20.00%)
STPL	0.39m (0.00%)	7.70	0.89 (13.07%)
YOUW	65,500	4.10	0.45 (12.33%)
BAPL	0.28m (0.00%)	9.13	1.00 (12.30%)
REDCO	0.18m (0.00%)	3.97	0.41 (11.52%)
SIBL	2,000	2.50	0.25 (11.11%)
LMSM	10,000	5.69	0.52 (10.06%)

iv. Losers by Price

- A) Name of current tab appearing on the screen.
- B) List of symbols that are on bottom according to price.



Symbol	Vol.	Current Price	Change (%)
UPFL	40	8350.00	57.50 (0.68%)
IDYM	50	713.15	37.40 (4.98%)
PMPK	2,550	695.00	36.00 (4.92%)
PKGS	37,600	569.00	9.13 (1.58%)
SAPT	300	300.00	8.70 (2.82%)
MARI	0.60m (0.00%)	404.25	5.39 (1.32%)
MSOT	86,200	99.57	5.24 (5.00%)
GADT	13,100	228.50	4.68 (2.01%)
ZIL	700	92.05	4.35 (4.51%)

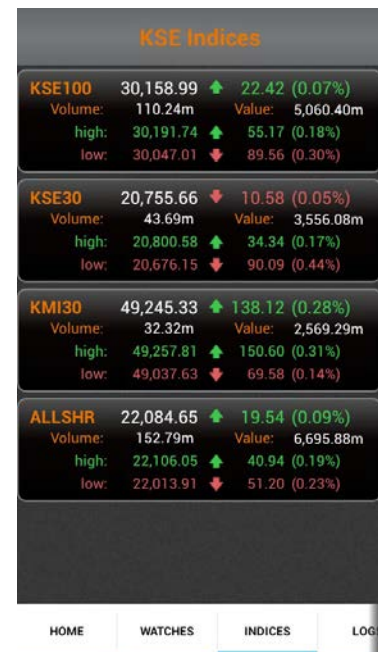
v. Losers by Percentage

- A) Name of current tab appearing on the screen.
- B) List of symbols that are on bottom according to percentage.



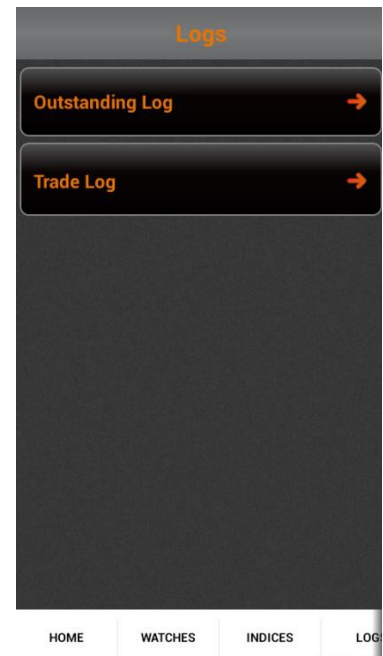
Indices

This window displays details of market position according to indices.



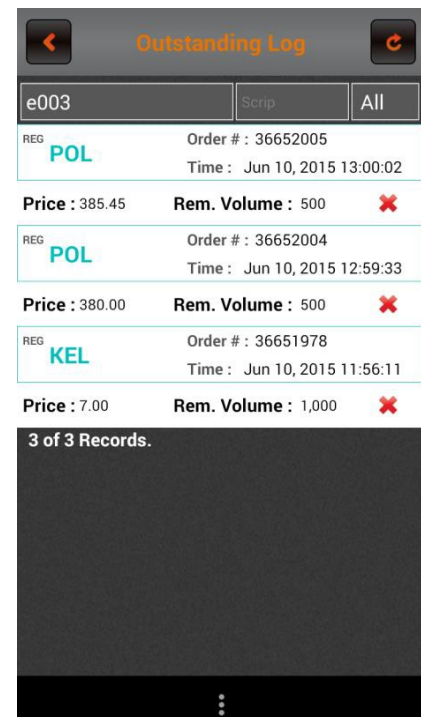
Logs

This window displays outstanding and trade logs of orders placed by the user.



i. Outstanding log

All the orders that are placed in queue to be traded are displayed in this log window. Enter order number, scrip name and market name to search for the order.





KITS APPLICATION USER MANUAL - FOR MOBILE

ii. Trade log

All the orders that have been traded are displayed in this log window.
Enter order number, scrip name and market name to search for the order.

The screenshot shows the 'Trade Log' interface with a search bar containing 'e003' and 'All'. It displays four trade entries for 'PAKRI' with the following details:

Price and Value		Volume - 5,000	
Price	Value	Fill	Remaining
32.60	48,900.00	1,500	3,500

Price and Value		Volume - 100,000	
Price	Value	Fill	Remaining
32.60	3,211,100.00	98,500	0

Price and Value		Volume - 100,000	
Price	Value	Fill	Remaining
32.60	32,600.00	1,000	98,500

Price and Value		Volume - 1,000	
Price	Value	Fill	Remaining